

Dynasty® 280 Series

TIG/Stick Welding 
Power Source

Quick Specs



Industrial Applications

Precision Fabrication
Heavy Fabrication
Pipe and Tube Fabrication
Aerospace
Aluminum Ship Repair
Anodized Aluminum Fabrication

Processes

AC/DC TIG (GTAW)
Pulsed TIG (GTAW-P)
Stick (SMAW)
Air Carbon Arc (CAC-A)

Input Power 208–575 V, 3- or 1-Phase Power

Amperage Range 1–280 A (DC)
2–280 A (AC)

Rated Output 200 A at 28 V, 60% Duty Cycle

Net Weight 52 lb. (23.6 kg)

Upgradeable and expandable.

Front panel memory card data port provides the ability to easily upgrade software and expand product features.

Visit MillerWelds.com/TIGSoftware for the latest software upgrades and expansions.

Pro-Set™ eliminates the guesswork when setting weld parameters.

Use Pro-Set when you want the speed, convenience and confidence of preset controls. Simply select the feature and adjust until Pro-Set appears on the display.

Sleep timer conserves electricity.

This programmable feature will power down the machine if it sits idle for a specific time.



Allows for any input voltage hookup (208–575 V) with no manual linking, providing convenience in any job setting. Ideal solution for dirty or unreliable power.

Cooler Power Supply (CPS). An integrated 120-volt dedicated-use receptacle to power the Coolmate™ 1.3. The power switch on the Dynasty also activates the receptacle to help prevent torch failure. Available on select models, see page 6.

Blue Lightning™ high-frequency (HF) arc starter for non-contact arc initiation. Provides more consistent arc starts and greater reliability compared to traditional HF arc starters.



Dynasty 280



Dynasty 280 DX

Meter calibration allows digital meters to be calibrated for certification.

Wind Tunnel Technology™ protects internal electrical components from airborne contaminants, extending the product life.

Fan-On-Demand™ power source cooling system operates only when needed, reducing noise, energy use and the amount of contaminants pulled through the machine.



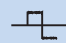
Power source is warranted for 3 years, parts and labor.

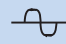
AC TIG Features

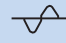
Balance control provides adjustable oxide removal which is essential for creating the highest quality aluminum welds. DX models provide extended ranges.

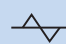
Frequency controls the width of the arc cone and can improve directional control of the arc.

AC Waveforms

 **Advanced squarewave,** fast freezing puddle, deep penetration and fast travel speeds.

 **Soft squarewave** for a soft buttery arc with maximum puddle control and good wetting action.

 **Sine wave** for customers that like a traditional arc. Quiet with good wetting.

 **Triangular wave** reduces the heat input and is good on thin aluminum. Fast travel speeds.

DC TIG Features

Exceptionally smooth and precise arc for welding exotic materials.

AC/DC Stick Features

DIG control allows the arc characteristics to be changed for specific applications and electrodes. Lower the DIG setting for smooth running electrodes like E7018 and increase the DIG setting for stiffer, more penetrating electrodes like E6010.

Hot Start™ adaptive control provides positive arc starts without sticking.

AC frequency control adds stability for smoother welds when AC Stick welding.

Stick-Stuck detects if the electrode is stuck to the part and turns the welding output off to safely and easily remove the electrode. Menu selectable.



Miller Electric Mfg. Co.
An ITW Company
1635 West Spencer Street
P.O. Box 1079
Appleton, WI 54912-1079 USA

Equipment Sales US and Canada
Phone: 866-931-9730
FAX: 800-637-2315
International Phone: 920-735-4554
International FAX: 920-735-4125

MillerWelds.com



Specifications (Subject to change without notice.)



Welding Mode	Input Power	Welding Amperage Range	Rated Output	Amps Input at Rated Load Output, 50/60 Hz							Max. Open-Circuit Voltage	Dimensions	Net Weight
				208 V	230 V	400 V	460 V	575 V	KVA	KW			
TIG (GTAW)	3-Phase	1–280 A (DC) 2–280 A (AC)	235 A at 19.4 V, 60% Duty Cycle	19	17	10	9	7	7.0	6.7	60 VDC (11 VDC**)	H: 13.6 in. (346 mm) W: 8.6 in. (219 mm) D: 22.5 in. (569 mm)	52 lb. (23.6 kg) 55 lb. (25 kg) with CPS
	1-Phase	1–280 A (DC) 2–280 A (AC)	235 A at 19.4 V, 60% Duty Cycle	33	30	17	15	12	6.9	6.8			
Stick (SMAW)	3-Phase	5–280 A	200 A at 28 V, 60% Duty Cycle	22	20	11	10	8	8.2	7.9	60 VDC (11 VDC**)	H: 13.6 in. (346 mm) W: 8.6 in. (219 mm) D: 22.5 in. (569 mm)	52 lb. (23.6 kg) 55 lb. (25 kg) with CPS
	1-Phase	5–280 A	180 A at 27.2 V, 60% Duty Cycle*	34	31	17	15	12	7.1	7.0			

* Refer to owner's manual for 208 V output ratings and duty cycle. ** Low OCV sense voltage for Stick and Lift-Arc™ TIG.

IP23 rating — This equipment is designed for outdoor use. It may be stored, but is not intended to be used outside during precipitation unless sheltered.

Operating temperature range is 14 to 104°F (-10 to 40°C). Storage temperature range is -22 to 149°F (-30 to 65°C). Portions of the preceding text are contained in EN 60974-1: "Welding power sources for arc welding equipment."

Certified by Canadian Standards Association to both the Canadian and U.S. Standards. All CE models conform to the applicable parts of the IEC 60974 series of standards.

Performance Data

Input Power	TIG (GTAW) Duty Cycle	Stick (SMAW) Duty Cycle	AC TIG Material Thickness Range	DC TIG Material Thickness Range	Stick Electrode Maximum Diameter	Carbon Arc Gouging (CAC-A) Maximum	Generator Requirement
3-Phase	280 A, 25% 235 A, 60% 200 A, 100%	280 A, 15% 200 A, 60% 160 A, 100%	.012–3/8 in.	.004–3/8 in.	6010: 1/4 in. 7018: 7/32 in. 7024: 3/16 in.	3/16 in.	12.5 kW
1-Phase*	280 A, 25% 235 A, 60% 200 A, 100%	280 A, 10% 180 A, 60% 160 A, 100%					

* Refer to owner's manual for 208 V output ratings and duty cycle.

Coolmate™ 1.3 Cooler



- Dynasty® models with CPS turn Coolmate 1.3 on and off
- Power indicator light
- Fluid level sight window
- Rustproof polyethylene-molded coolant tank and filler spout
- 1/4-HP motor is thermally protected to guard against overheating
- Efficient fin and tube heat exchanger
- Factory-set pressure relief valve (55 PSI) maintains consistent pressure during operation
- Filter and coolant filling spout are conveniently located
- Brass-body, positive displacement rotary vane pump provides consistent coolant flow and pressure rating with long pump-life expectancy

Input Power	Maximum Current Draw	Maximum Cooling Capacity	Rated Cooling Capacity	Tank Capacity	Dimensions	Net Weight
115 VAC, 60 Hz	4.7 A (60 Hz)	3400 W (11,600 BTU/hr.) 3.8 qt./min. (1.7 L/min.)	1330 W (4540 BTU/hr.) 1.1 qt./min. (1 L/min.)	1.3 gal. (4.9 L)	H: 11.25 in. (286 mm) W: 10.375 in. (264 mm) D: 24 in. (610 mm)	43 lb. (20 kg)

Weldcraft® W-280 (WP-280) TIG Torch

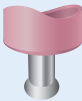
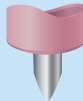


- Two-piece torch head and exclusive Super Cool™ Technology provides additional surface area to increase cooling efficiency and capacity
- Torch body includes an anti-rotation feature and multi-position locking to prevent handle movement during welding and improve operator control
- Mechanical fittings provide a secure gas and water connection to prevent leakage and allow easy hose replacement

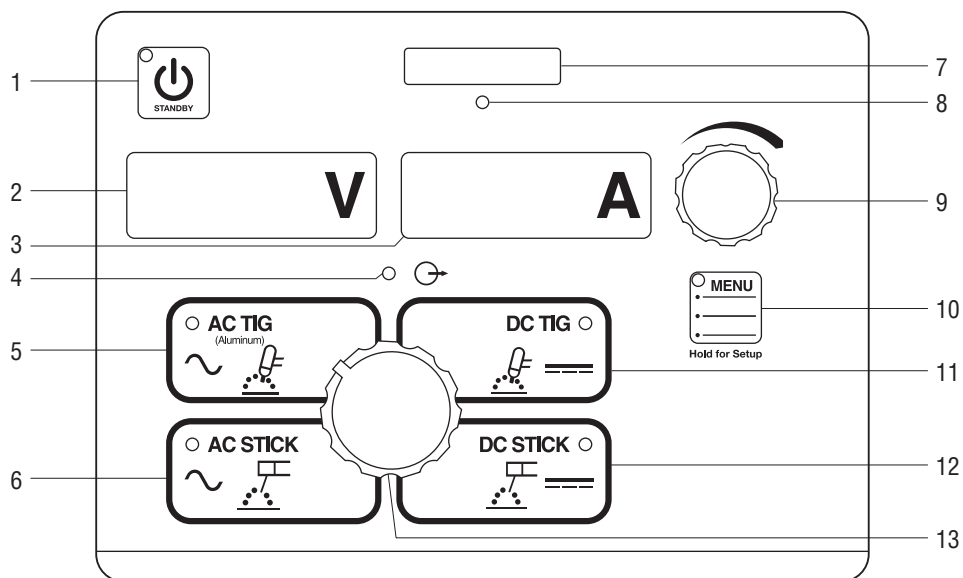
Cooling Method	AC Rating	DC Rating	Consumables	Electrode Range	Cable
Water-cooled	195 A, 100% Duty Cycle	280 A, 100% Duty Cycle	13N	.020–1/8 in. (0.5–3.2 mm)	Three-piece

Conforms to IEC Standard 60974-7.

TIG Upgrade Chart

Why Upgrade?	Syncrowave 250	UPGRADE	Dynasty 280	UPGRADE	Dynasty 280 DX	Dynasty 280 Benefits
Thickness Capacity	.015–3/8 in. Aluminum .012–3/8 in. Steel	➔	.012–3/8 in. Aluminum .004–3/8 in. Steel			The Dynasty 280 has a lower bottom end, and can weld thinner metals.
Duty Cycle	200 A, 60%	➔	235 A, 60%			Weld longer at higher amperages. At 200 A the Dynasty 280 can weld continuously.
High Frequency Arc Starting	Continuous HF	➔	Start Only HF			HF on Start Only limits HF interference issues during the weld.
Precision Controls	Digital and Dial %	➔	All Digital			Precise adjustments can be made with all-digital controls for greater quality control and repeatability.
Confusion on Where to Set the Controls?	Trial and Error	➔	Pro-Set™ eliminates the guesswork when setting weld parameters.			Select the feature and adjust until Pro-Set appears in display. Pro-Set is available for Balance, Frequency, Pulse and DIG parameters.
AC Frequency Control (Aluminum TIG)	Fixed at 60 Hz	➔	Variable 70–150 Hz	➔	Variable 20–400 Hz	Higher frequencies provide better arc control and faster travel speeds.
AC Balance Control (Aluminum TIG)	45–68% Electrode Negative	➔	60–80% Electrode Negative	➔	50–99% Electrode Negative	Greater electrode negative helps to produce welds with less etching for more aesthetic looking welds.
AC Waveforms (Aluminum TIG)	Soft Squarewave		Soft Squarewave	➔	Advanced Squarewave Soft Squarewave Sine Wave Triangular Wave	Advanced Squarewave = Travel faster Soft Squarewave = Maximum puddle control Sine Wave = Traditional characteristics Triangular Wave = Reduced heat input
Weld Aluminum with Pointed Tungsten (Aluminum TIG)						Extended Frequency and Balance controls permit welding aluminum with pointed tungsten. The benefits are reduced heat input into your part, smaller weld beads, better starting, more control of the arc and faster travel speeds.
Portability	378 lb. (172 kg) Crane or Cart	➔	52 lb. (23.6 kg) Carry or Cart			Easier to move because of size and weight. Don't have to wait for a crane operator.
Power Flexibility	Manual Link, 208/230/460 V Single-Phase Only	➔	Auto-Line™, 208–575 V Single-Phase or Three-Phase			Auto-Line allows the unit to operate on any voltage. Single- or three-phase. Even generators!
Line Draw at 200 Amps	77 A, 230 V, Single-Phase	➔	25 A, 230 V, Single-Phase 15 A, 230 V, Three-Phase			Line requirement to operate is much less. Smaller electrical service needed, smaller breaker/fuses and power cord.

Dynasty® 280 Control Panel



1. Standby Switch

2. Voltmeter Display

3. Ammeter Display

4. Output Contactor "On" Indicator

5. AC TIG Process Menu Parameters

Amperage	2–280 A**
Balance*	60–80%
Frequency*	70–150 Hz
Postflow	Auto/Off–50 seconds

6. AC Stick Process Menu Parameters

Amperage	5–280 A
DIG*	Off–100%

7. Memory Card Port

8. Activity Indicator

9. Encoder Control

10. Menu Ranges

11. DC TIG Process Menu Parameters

Amperage	1–280 A**
Pulse*	Off–250 PPS
Postflow	Auto/Off–50 seconds

12. DC Stick Process Menu Parameters

Amperage	5–280 A
DIG*	Off–100%

13. Process Selector

*Pro-Set parameter selectable. **Amperage range is tungsten size dependent.

User Menu (Hold Menu button three seconds.)

AC TIG

1. Start = HF/Lift Arc
2. Tungsten Size = .020–1/8 in. or .05–3.2 mm
3. Remote Trigger = STD/HOLD/OUTPUT ON

AC Stick

1. Hot Start = ON/OFF
2. Remote Trigger = OUTPUT ON/STD

DC TIG

1. Start = Lift Arc/HF
2. Tungsten Size = .020–1/8 in. or .05–3.2 mm
3. Remote Trigger = STD/HOLD/OUTPUT ON

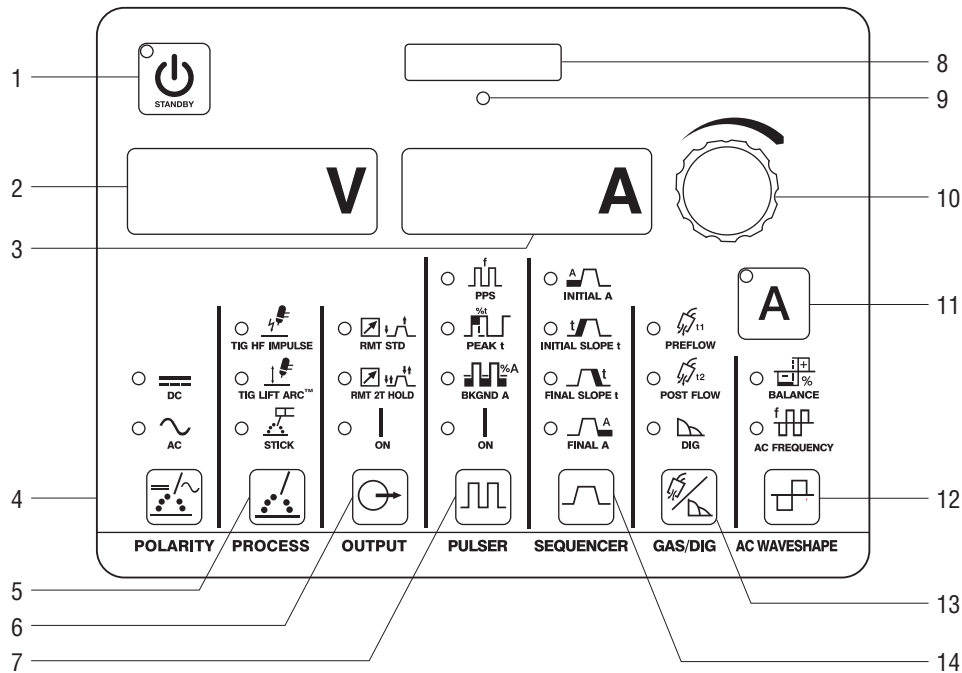
DC Stick

1. Hot Start = ON/OFF
2. Remote Trigger = OUTPUT ON/STD

Tech Menu (Hold Menu button five seconds.)

1. Arc Time
 - 0.0–9999 hours
 - 0.0–59 minutes
 - 0–999,999 cycles
 - Resettable
2. Error Log = Error event recorder
3. Sleep Timer = OFF/5/10/15/30/45MIN/1HR
4. Stick Stuc = OFF/ON
5. OCV = LOW/NORM
6. Cooler Power = ON/OFF (only on Dynasty models with CPS)
7. Machine Reset
8. Software Number
9. Serial Number

Dynasty® 280 DX Control Panel



1. Standby Switch

2. Voltmeter Display

3. Ammeter Display

4. Polarity AC/DC

5. Process/ Arc Starting

TIG: HF Impulse, Lift-Arc
STICK: Adaptive Hot Start

6. Output Control

Standard Remote,
2T Trigger Hold,
Output ON

7. Pulser Control

Pulses per Second* DC: 0.1–500 PPS
AC: 0.1–500 PPS
Peak Time* 5–95%
Background Amps* 5–95%

8. Memory Card Port

9. Activity Indicator

10. Encoder Control

11. Amperage Button

12. AC Waveshape

Balance* 50–99% EN
Frequency* 20–400 Hz

13. Gas/DIG

Preflow 0.0–25.0 seconds
Postflow Auto/Off–50 seconds
DIG* Off–100%

14. Sequencer Control

Initial Amps AC: 2–280 A
DC: 1–280 A
Initial Slope 0.0–25.0 seconds
Weld Time 0.0–999 seconds
Final Slope 0.0–25.0 seconds
Final Amps AC: 2–280 A
DC: 1–280 A

*Pro-Set parameter selectable.

User Menu (Press Gas and Amperage buttons.)

1. Tungsten Size = .020–1/8 in./GEN or .05–3.2 mm
2. Remote Trigger = 3T/4T/4TL/4TLE
3. Wave Form = SOFT/ADVS/SINE/TRI
4. Stick Hot Start = ON/OFF

Tech Menu (Hold Gas and Amperage buttons five seconds.)

1. Arc Time 0.0–9999 hours
0.0–59 minutes
0–999,999 cycles
Resettable
2. Error Log = Error event recorder
3. Sleep Timer = OFF/5/10/15/30/45MIN/1HR
4. Stick Stuc = OFF/ON
5. OCV = LOW/NORM
6. Cooler Power = ON/OFF (only on Dynasty models with CPS)
7. Weld Timers = OFF/ON
8. Locks = OFF/1–4
9. Meter Display
10. External Pulse Control = OFF/ON
11. Machine Reset
12. Software Number
13. Serial Number

Dynasty® 280 Models/Packages

Build an Air-Cooled Package

Select desired stock number for each step.



#907 550
Dynasty shown.



#195 055
kit shown.

Step #1 • Select Dynasty

Dynasty 280	#907 550	<i>Note: For models without the Cooler Power Supply (CPS), the Coolmate 1.3 must be powered through an external 115-volt facility power.</i>
Dynasty 280 with CPS	#907 537	
Dynasty 280 DX	#907 551	
Dynasty 280 DX with CPS	#907 514	

Dynasty comes with adjustable shoulder strap, 8-ft. primary cord, quick-reference guide and two Dinse 50-mm connectors.

Step #2 • Select Contractor Kit

Foot Control Contractor Kit	#195 054
Fingertip Control Contractor Kit	#195 055

See page 7 for kit contents.

Build a Water-Cooled Package

Select desired stock number for each step.



#907 537 002
Dynasty 280
TIGRunner® shown
with four bottles
of #043 810
Low-Conductivity
Coolant.



#194 744 remote shown.



#300 990 kit shown.

Step #1 • Select Dynasty TIGRunner® and Coolant

Dynasty 280 (with CPS) TIGRunner	#907 537 002
Dynasty 280 DX (with CPS) TIGRunner	#907 514 001
&	
Low-Conductivity Coolant (Must be ordered in quantities of four.)	#043 810

Dynasty TIGRunner comes with 8-ft. primary cord, quick-reference guide, two Dinse 50-mm connectors, Coolmate™ 1.3 and small runner cart.

Step #2 • Select Remote Control

Wireless Foot	#300 429
RFCS-14 HD Foot	#194 744
RCC-14 E/W Fingertip	#151 086
RCCS-14 N/S Fingertip	#043 688
RMS-14 Pushbutton	#187 208
RMLS-14 Momentary/Maintained	#129 337
RHC-14 Hand	#242 211 020
Wireless Hand	#300 430

See page 7 for remote descriptions.

Step #3 • Select Torch Kit

W-250 (WP-20) Kit	#300 185
W-280 (WP-280) Kit (recommended)	#300 990
W-310 (CS310) Kit	#300 183

See page 7 for kit contents.

Water-Cooled Packages

Use a single stock number to order a complete preconfigured system.



#951 468
package shown.

Select Water-Cooled Complete Package

Dynasty 280 (with CPS) Complete with Foot Control	#951 466
Dynasty 280 DX (with CPS) Complete with Foot Control	#951 468
Dynasty 280 DX (with CPS) Complete with Wireless Foot Control	#951 469

Comes with:

- 8-ft. primary cord
- Quick-reference guide
- Coolmate™ 1.3 #300 972
- Coolant (4 one-gallon bottles of #043 810)
- Small runner cart #300 988
- Remote control #194 744 (foot) or remote control #300 429 (wireless foot)
- W-280 (WP-280) torch kit #300 990 (see page 7 for contents)

Genuine Miller Accessories



Small Runner Cart #300 988
Designed for Dynasty or Maxstar 280 with or without a Coolmate 1.3 cooler. Cart features single cylinder rack, foot pedal holder, two cable/torch holders, and two TIG filler holders.



Coolmate™ 1.3 #300 972 115 VAC
1.3-gallon cooler designed to cool torches up to 280 amps.



Premium TIG Gloves
#263 345 X-Small (Women's)
#263 346 Small (Women's)
#263 347 Medium
#263 348 Large
#263 349 X-Large

Completely unlined, premium goat grain leather with triple-padded palm.

Memory Card (Blank) #301 080
A blank, commercially available memory card used for transferring software updates and expandable features from your computer to the machine.

Memory Card Expansion
#301 151 14-Pin Automation Expansion
Provides the ability to access common automation functions through the 14-pin connection.
#301 235 Independent AC Expansion
Allows EP and EN amperages and waveforms to be set independently to precisely control heat input to the work and electrode.

TIG Torches, Kits and Connectors

Water-Cooled Torch Kits
#300 185 W-250 (WP-20)
#300 990 W-280 (WP-280) (recommended)
#300 183 W-310 (CS310)
Kit comes with Weldcraft® 25-foot (7.6 m) TIG torch with Dinse connector, torch cable cover, work clamp with 15-foot (4.6 m) cable, Miller I Smith flowmeter regulator with gas hose and torch accessory kit (1/16-, 3/32- and 1/8-inch 2% ceriated tungsten, nozzles, collets and collet bodies).



Water-Cooled TIG Torch Connector #195 377
50-mm Dinse with water return line. For use with all Weldcraft® water-cooled torches.

Contractor Kits
#195 054 150 A RFCS-14 HD Foot Pedal Kit
#195 055 150 A RCCS-14 Fingertip Kit
All-in-one TIG/Stick welding kit comes with either a RFCS-14 HD foot control or RCCS-14 fingertip control, Weldcraft® A-150 TIG torch, 200-amp Stick electrode holder with 15-foot (4.6 m) cable, 300-amp work clamp with 15-foot (4.6 m) cable, Miller I Smith flow gauge regulator with 12-foot (3.7 m) gas hose, gas hose coupler, AK2C torch accessory kit, TIG torch connector, and protective carrying case.



Weldcraft® A-200 (WP-26) TIG Torch
#WP-26-12-R (12 ft.)
#WP-26-25-R (25 ft.)
200-amp air-cooled torch. Torch body gas valve models also available.

Note: A-200 (WP-26) torches require #195 379 connector.



Air-Cooled TIG Torch Connectors
#195 379 A-200 (WP-26)
#195 378* All others
50-mm Dinse-style for one-piece air-cooled torch.
*A-80 (WP-24) torches require 24-5 connector.

Remote Controls and Switches



Wireless Remote Foot Control #300 429
For remote current and contactor control. Receiver plugs directly into the 14-pin receptacle of Miller machine. 90-foot (27.4 m) operating range.



RFCS-14 HD Foot Control #194 744
Maximum flexibility is accomplished with a reconfigurable cord that can exit the front, back or either side of the pedal. Foot pedal provides remote current and contactor control. Includes 20-foot (6 m) cord and 14-pin plug.



RCC-14 Remote Contactor and Current Control #151 086 14-pin plug
Side-to-side (east/west) rotary-motion fingertip control fastens to TIG torch using two Velcro® straps. Includes 26.5-foot (8 m) control cord.



RCCS-14 Remote Contactor and Current Control #043 688 14-pin plug
North/south rotary-motion fingertip control fastens to TIG torch using two Velcro® straps. Includes 26.5-foot (8 m) control cord.



RMS-14 On/Off Control #187 208
Momentary-contact switch for contactor control. Rubber-covered pushbutton dome switch ideal for repetitive on-off applications. Includes 26.5-foot (8 m) cord and 14-pin plug.



RMLS-14 Switch #129 337
Momentary- and maintained-contact rocker switch for contactor control. Push forward for maintained contact and backward for momentary contact. Includes 26.5-foot (8 m) cord and 14-pin plug.



RHC-14 Hand Control #242 211 020
Miniature hand control for remote current and contactor control. Dimensions: 4 x 4 x 3.25 inches (102 x 102 x 83 mm). Includes 20-foot (6 m) cord and 14-pin plug.



Wireless Remote Hand Control #300 430
For remote current and contactor control. Receiver plugs directly into the 14-pin receptacle of Miller machine. 300-foot (91.4 m) operating range.

Educational Materials

To order, please call Miller Literature at 866-931-9732 or visit MillerWelds.com/resources/tools.

Gas Tungsten Arc Welding (TIG) Publication #250 833

DVD Setup Video #251 116
Video topics include Tungsten Selection, Setup Menu, DC Pulse, Sequencer, Balance and Frequency Settings.

Tungsten

Tungsten	Amp Range	2% Ceriated (AC/DC)	2% Lanthanated (AC/DC)
1/16 in. (1.6 mm)	70–150 A	WC116X7	WL2116X7
3/32 in. (2.4 mm)	140–250 A	WC332X7	WL2332X7
1/8 in. (3.2 mm)	225–400 A	WC018X7	WL2018X7
5/32 in. (4.0 mm)	300–500 A	WC532X7	WL2532X7

Ordering Information

Equipment and Options	Stock No.	Description	Qty.	Price
Dynasty® 280	#907 550	Auto-Line™ 208–575 VAC, 50/60 Hz, CSA . 8-ft. primary cord		
Dynasty® 280 with CPS	#907 537	Auto-Line™ 208–575 VAC, 50/60 Hz, CSA . 8-ft. primary cord		
Dynasty® 280 DX	#907 551	Auto-Line™ 208–575 VAC, 50/60 Hz, CSA . 8-ft. primary cord		
Dynasty® 280 DX with CPS	#907 514	Auto-Line™ 208–575 VAC, 50/60 Hz, CSA . 8-ft. primary cord		
Water-Cooled Packages				
Dynasty® 280 (with CPS) TIGRunner®	#907 537 002	Auto-Line™ 208–575 VAC, 50/60 Hz, CSA . 8-ft. primary cord (Torch kit, accessories and coolant sold separately)		
Dynasty® 280 DX (with CPS) TIGRunner®	#907 514 001	Auto-Line™ 208–575 VAC, 50/60 Hz, CSA . 8-ft. primary cord (Torch kit, accessories and coolant sold separately)		
Dynasty® 280 (with CPS) Complete w/Foot Control	#951 466	Auto-Line™ 208–575 VAC, 50/60 Hz, CSA . 8-ft. primary cord		
Dynasty® 280 DX (with CPS) Complete w/Foot Control	#951 468	Auto-Line™ 208–575 VAC, 50/60 Hz, CSA . 8-ft. primary cord		
Dynasty® 280 DX (with CPS) Complete with Wireless Foot Control	#951 469	Auto-Line™ 208–575 VAC, 50/60 Hz, CSA . 8-ft. primary cord		
Accessories				
Small Runner Cart	#300 988			
Coolmate™ 1.3	#300 972	115 VAC, 60 Hz, CSA . <i>Requires coolant</i>		
TIG Coolant (Must be ordered in quantities of four)	#043 810	1-gallon plastic bottle. Protects against freezing to -37° Fahrenheit (-38° C) or boiling to 227° Fahrenheit (108° C)		
TIG Gloves		See page 7		
Memory Card (Blank)	#301 080			
Memory Card Expansion	#301 151 #301 235	14-pin automation expansion Independent AC expansion		
TIG Torches, Kits and Connectors				
Water-Cooled Torch Kits	#300 185 #300 990 #300 183	W-250 (WP-20) W-280 (WP-280) (recommended for Dynasty 280) W-310 (CS310)		
Water-Cooled TIG Torch Connector	#195 377	Connects Weldcraft® water-cooled torches to Dinse connector		
Air-Cooled Contractor Kits	#195 055 #195 054	Fingertip Foot pedal		
Weldcraft® A-150 (WP-17) TIG Torch	#WP-17-12-R #WP-17-25-R	12-ft. (3.7 m) cable. Requires #195 378 connector 25-ft. (7.6 m) cable. Requires #195 378 connector		
Weldcraft® A-200 (WP-26) TIG Torch	#WP-26-12-R #WP-26-25-R	12-ft. (3.7 m) cable. Requires #195 379 connector 25-ft. (7.6 m) cable. Requires #195 379 connector		
Air-Cooled TIG Torch Connectors	#195 379 #195 378	Connects Weldcraft® A-200 (WP-26) torch to Dinse connector Connects all air-cooled Weldcraft® torches (except A-200) to Dinse connector. A-80 (WP-24) torches require 24-5 connector		
Tungsten		See page 7		
Remote Controls				
Wireless Remote Foot Control	#300 429	Foot control with wireless 90-ft. (27.4 m) operating range		
RFCS-14 HD	#194 744	Heavy-duty foot control		
RCC-14	#151 086	Side-to-side (east/west) fingertip control		
RCCS-14	#043 688	North/south fingertip control		
RMS-14	#187 208	Momentary rubber dome switch		
RMLS-14	#129 337	Momentary/maintained rocker switch		
RHC-14	#242 211 020	Hand control		
Wireless Remote Hand Control	#300 430	Hand control with wireless 300-ft. (91.4 m) operating range		
Educational Materials				
Gas Tungsten Arc Welding (TIG) Publication	#250 833			
DVD Setup Video	#251 116			

Date:

Total Quoted Price:

Distributed by:

